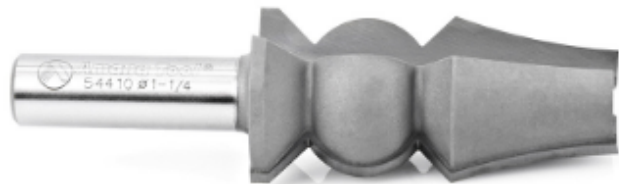


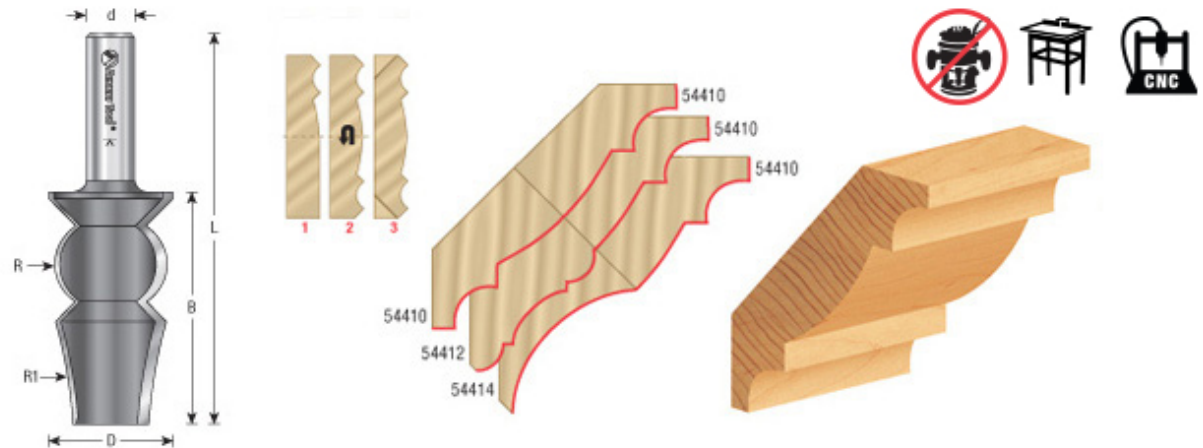
Edge of Arlington Saw & Tool, Inc.

124 South Collins
 Arlington, TX 76010
 Phone:817-461-7171 • Fax: 817-795-6651
 Toll Free: 888-461-7171
 Email: info@eoasaw.com
 Website: www.eoasaw.com



Amana Tool Reversible Crown Molding Extender Carbide-Tipped 2-Flute

Thank you for shopping with us! **Create crown molding up to 4 1/2" wide!** Now you can make extra-large architectural crown moldings with your table-mounted router. Our new extender bit enables you to make unique crown moldings in every type of wood. You're no longer limited to the small selection of crown moldings at the lumber dealer. This specially designed bit works in conjunction with either our vertical or horizontal crown molding bits, allowing you to make crown moldings up to 4 1/2" wide. Bevel back edges, cutting off 45° excess using one of our chamfer bits. Can be used with other crown molding bits to create many different combinations!



Item #	Manufacturer	Diameter	Cut Height, Length, or Width	Flute Note	Overall Length	Radius R1/Radius	Shank	Price
--------	--------------	----------	------------------------------	------------	----------------	------------------	-------	-------

54410	Amana Tool	1 1/4 in	2-3/8 in	2	Can be used with other crown molding bits to create many different combinations!	4 in	7/16 in	3 15/16 in	1/2 in	\$82.65
-------	------------	----------	----------	---	--	------	---------	------------	--------	----------------
